

CATS Classic Cougar Club

Installation of a reproduction or restored Mercury Fuel Door Crest

Difficulty Level: 1/10 (Easy)

Installation Time: 30 min.

Installer: Scott Zeller

Cougar: 1969 XR7 Hardtop

This has been staring at me over the last few years, my original worn out, weathered crest on the fuel door. Replacing this item is a quick repair that can really be done by just about anyone.

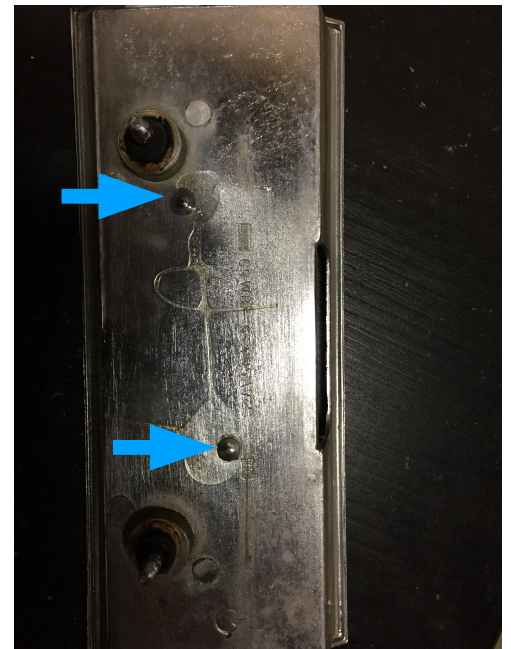
Pull down your fuel door to reveal the 4 acorn nuts. Using a 3/8 socket, The top two nuts will remove the chrome trim, the middle two nuts will remove the Fuel Door Insert Frame with the crest attached. This will not remove the entire fuel door from the springs, just release the fuel insert frame. **Take extra care when handling the insert frame around the VERY BRITTLE red plastic lens surrounding it.** (Trust Me!)

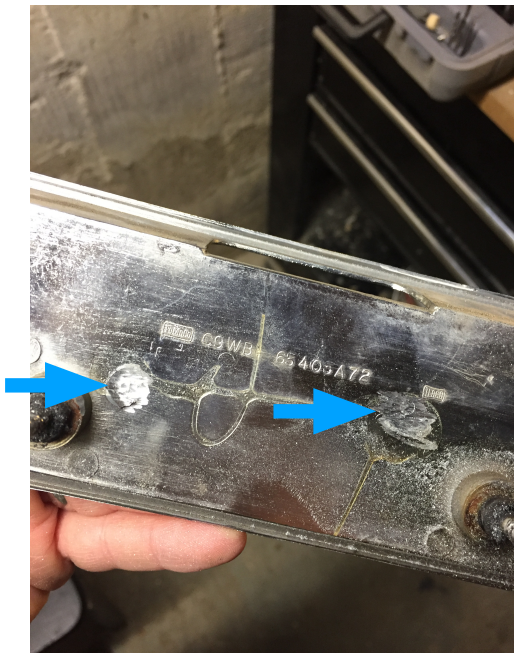


The back of the insert frame will show you two studs (see pic) holding the emblem. To remove the emblem, simply grind down the studs on the backside. A Dremel with grinder attachment worked very well for this.

Restoration or Reproduction Crests are available at WCCC:
<https://secure.cougarpartscatalog.com/c9wb-65405a92.html?attribs=87>

If you break your lens or just want to swap in a reproduction, check out Johns Classic Cougars:
<https://www.johnsclassiccougars.com/ProductDetails.asp?ProductCode=13A50>





(After Grinding)

The crest will pop right out of the frame.



With your shiny new restored or reproduction Mercury Crest in hand, apply two generous drops of epoxy to secure this back into the Insert Frame and let it cure overnight. I recommend JB Weld. You will likely need to cut/grind down the studs on the back before reinstall. Reinstall your pieces back together the same way they came out, taking care once again to not **crack** your red lens frame.
(I still can't believe I did that).

